

# NASSAU COUNTY SCHOOLS 1 MILL TAX INCREASE REFERENDUM

This PDF will help you navigate the Nassau County Tax Map in order to assist with questions you may have about how a 1 Mill Tax Increase will potentially affect your future property taxes. Information about the referendum vote can be found here:

<https://www.nassau.k12.fl.us/vote>

Once you **Enter the Map**, you will be shown an overall view of Nassau County. If you want to skip that and zoom in to your property, you can use the “**Search By:**” window in the upper left.

**Search By:**

Address

▼

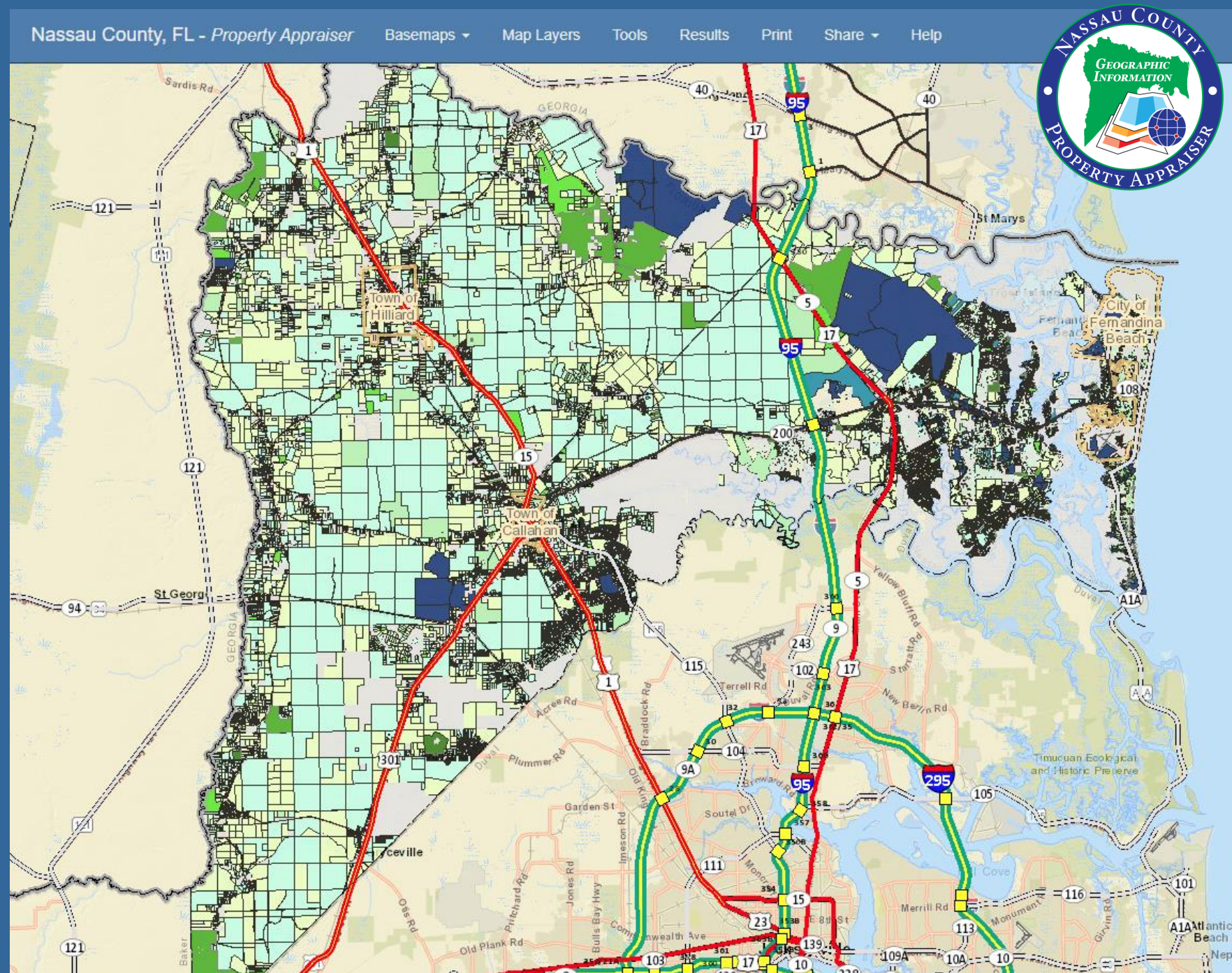
Enter Address

Go!

Type in your **Owner Name, Parcel ID or Address** and then hit “**Go**” to zoom to your parcel. From there, you can use the wheel on your mouse or pinching on your phone to zoom in and out and view other parcels around yours.



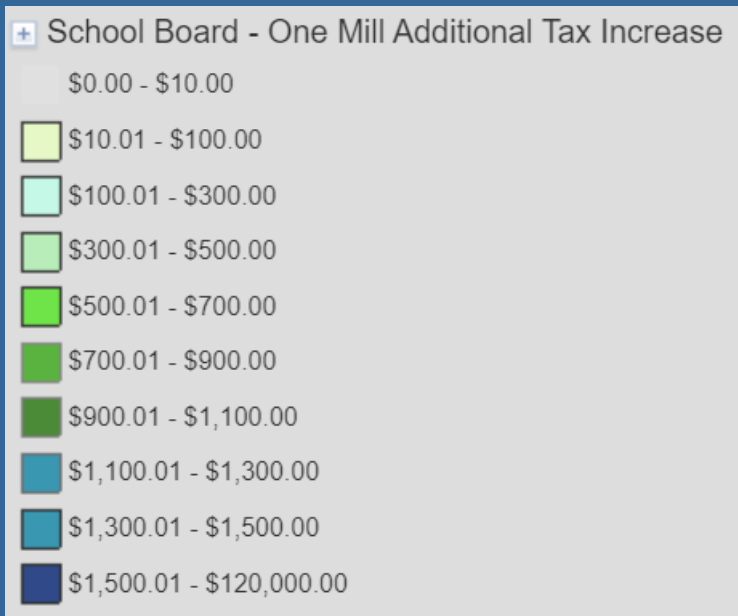
Click the trash icon to remove the results from your view if desired.



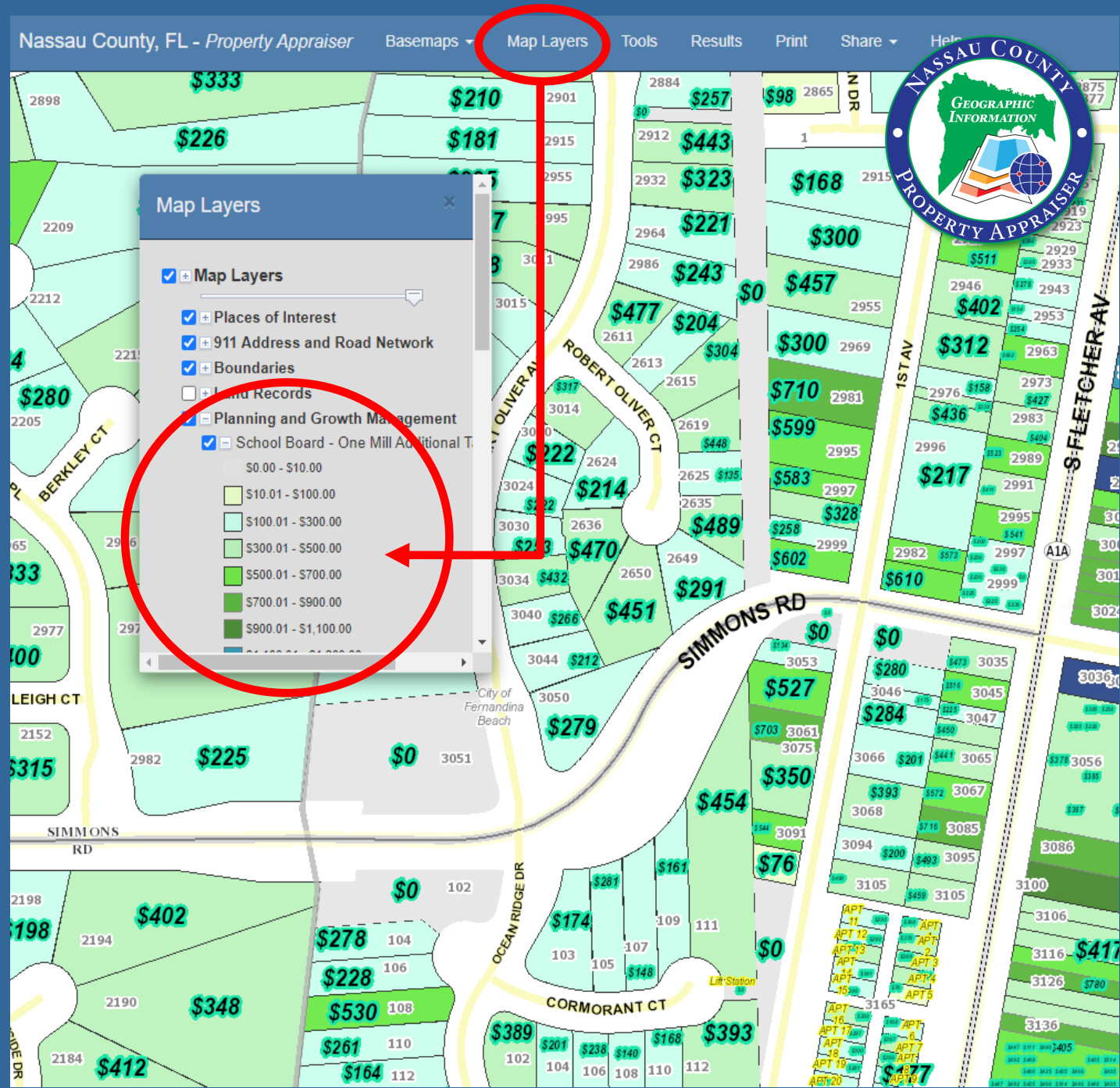


The map provides a legend that explains the colors.  
Click on "Map Layers" in the banner  
and a Map Layers Window will appear.

All Nassau County parcels are filled with a color ranging from Light Green to Dark Blue. Those colors indicate the amount of additional taxes that will be owed based on the current taxable value of your property.

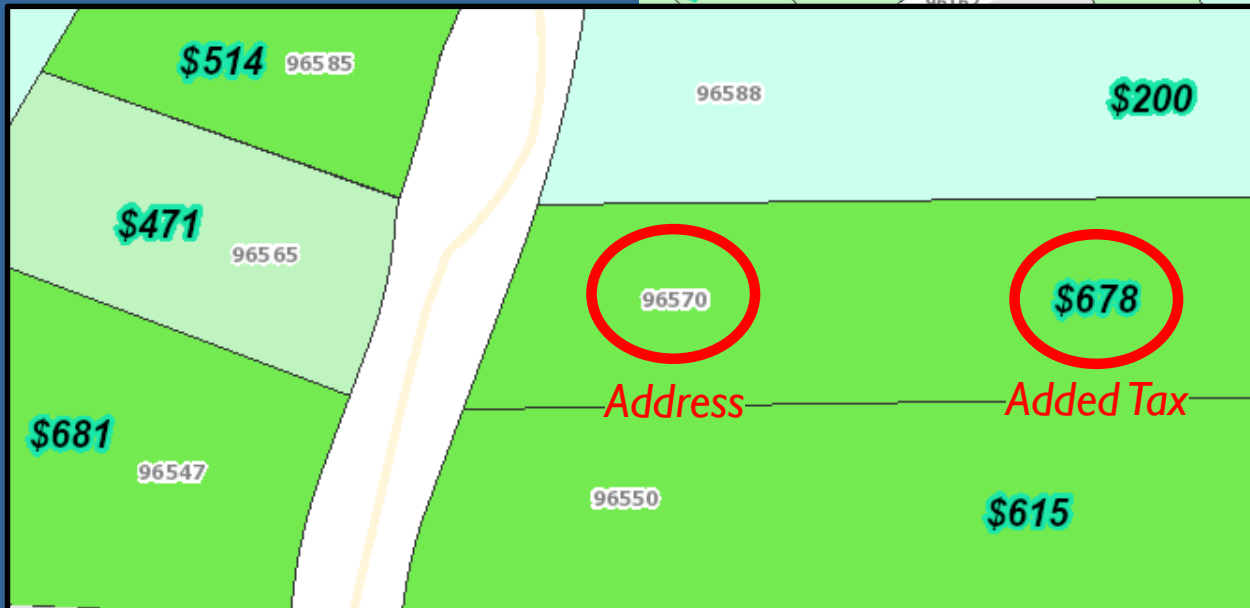


Lighter colors are smaller amounts. Darker colors are greater amounts. Light gray represents tax exempt parcels.



Black dollar amounts with a green halo are what the property owner is expected to pay in additional school taxes if the 1 Mill increase is passed.

As you zoom in, amounts on smaller parcels will show up.



Gray numbers with white halos are addresses.

